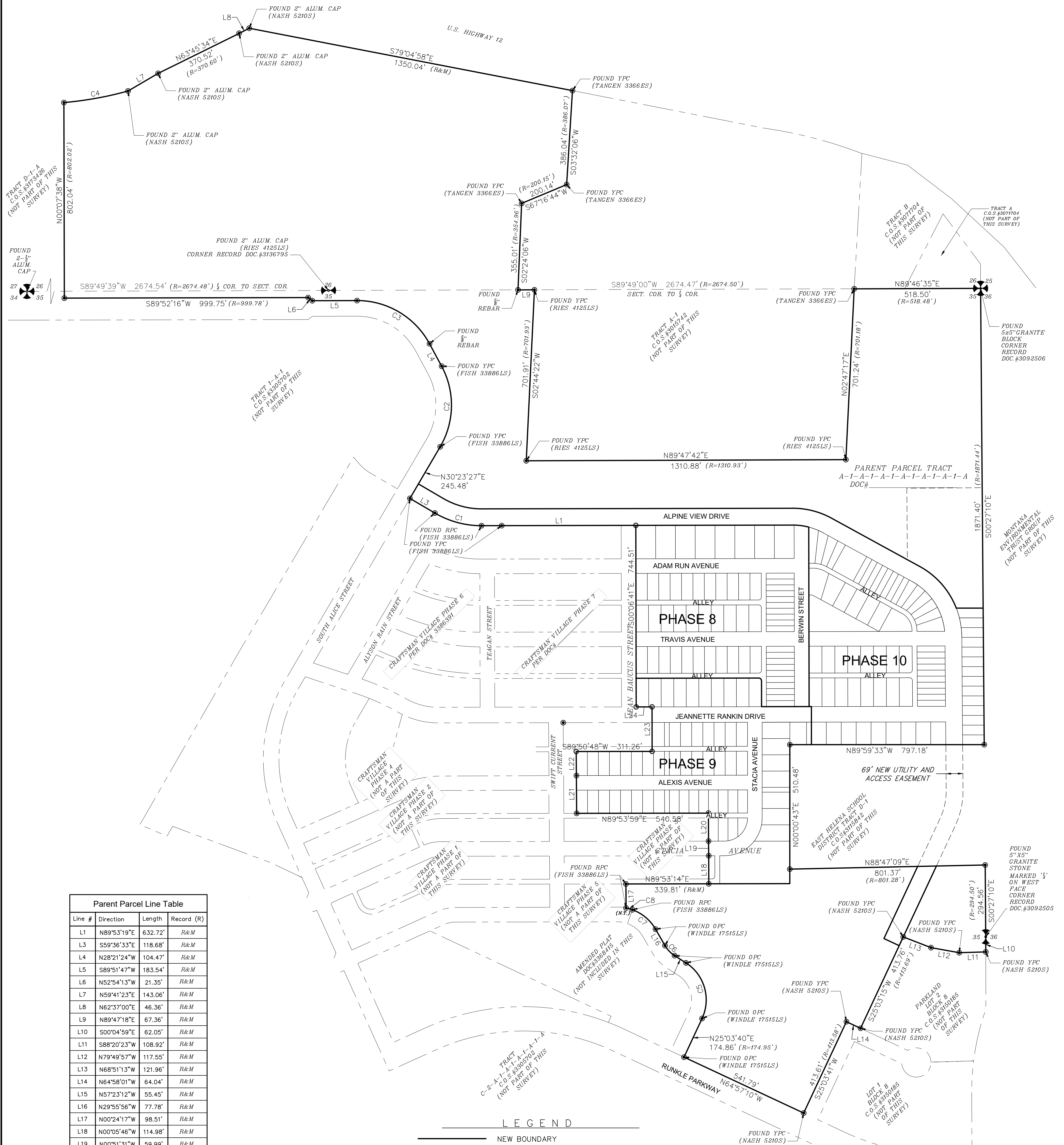


PLAT OF CRAFTSMAN VILLAGE PHASE 8, 9, & 10 OF THE CROSSROADS AT MOUNTAIN VIEW MEADOWS SUBDIVISION

DRAFT

A SUBDIVISION OF TRACT A-1-A-1-A-1-A-1-A-1-A-1-A OF AMENDED PLAT NO. _____
 LOCATED WITHIN THE SOUTH ONE-HALF OF SECTION 26, AND THE NORTH ONE-HALF AND SOUTHEAST ONE-QUARTER OF SECTION 35
 TOWNSHIP 10 NORTH, RANGE 3 WEST, P.M.M. LEWIS & CLARK COUNTY, MONTANA



Line #	Direction	Length	Record (R)
L1	N89°53'19"E	632.72'	R&M
L3	S59°36'33"E	118.68'	R&M
L4	N28°21'24"W	104.47'	R&M
L5	S89°51'47"W	183.54'	R&M
L6	N52°54'13"W	21.35'	R&M
L7	N59°41'23"E	143.06'	R&M
L8	N62°37'00"E	46.36'	R&M
L9	N89°47'18"E	67.36'	R&M
L10	S00°04'59"E	62.05'	R&M
L11	S88°20'23"W	108.92'	R&M
L12	N79°49'57"W	117.55'	R&M
L13	N68°51'13"W	121.96'	R&M
L14	N64°58'01"W	64.04'	R&M
L15	N57°23'12"W	55.45'	R&M
L16	N29°55'56"W	77.78'	R&M
L17	N00°24'17"W	98.51'	R&M
L18	N00°05'46"W	114.98'	R&M
L19	N00°51'31"W	59.99'	R&M
L20	N00°05'34"W	114.97'	R&M
L21	N00°24'03"W	155.03'	R ₁ =155.00'
L22	N00°24'03"W	98.49'	R ₁ =98.52'
L23	S00°06'41"E	182.49'	N/A
L24	N89°53'19"E	65.00'	N/A

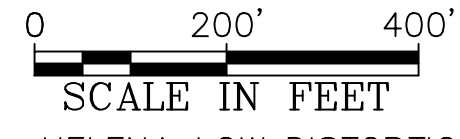
Curve #	Length	Radius	Delta	Chord Direction	Chord Length
C1	200.70'	377.00'	030°30'08"	S74° 51' 37"E	198.34'
C2	345.54'	377.00'	058°44'51"	N1° 01' 02"E	330.60'
C3	363.38'	377.00'	061°46'49"	N59° 13' 54"W	346.03'
C4	267.57'	1453.24'	010°32'58"	N79° 47' 28"E	267.19'
C5	259.16'	180.00'	082°29'40"	N16° 08' 22"W	237.35'
C6	57.48'	120.00'	027°26'39"	S43° 39' 53"E	56.93'
C7	126.18'	180.00'	040°09'47"	N50° 00' 49"W	123.61'
C8	27.08'	180.00'	008°37'12"	N74° 24' 19"W	27.05'

LEGEND

- NEW BOUNDARY
- INTERIOR LOT LINES
- - - EXISTING EASEMENT (AS NOTED)
- - - NEW EASEMENT (AS NOTED)
- SECTION LINE
- ADJOINER BOUNDARIES—GRAPHICAL ONLY
- FOUND MONUMENT YPC 18636LS OR AS NOTED
- SET 5/8"X24" REBAR W/ Y.P.C. (STAHLY ENG. 33886LS)
- FOUND PLSS MONUMENT AS NOTED
- MEASUREMENT THIS SURVEY
- MEASUREMENT OF RECORD, PER DOC.#3386391 OR AS NOTED
- P.O.B.
- Y.P.C.
- R.P.C.
- C.O.S.
- CERTIFICATE OF SURVEY NUMBER
- AC.
- SQ.FT.
- NON-TANGENT
- R/W
- RIGHT-OF-WAY

NOTES:
 1.) ALL DISTANCES ARE IN INTERNATIONAL FEET.
 2.) EXISTING EASEMENTS ARE SHOWN FOR INFORMATIONAL PURPOSES, BUT NOT ALL EASEMENTS ARE SHOWN ON THIS PLAT.

ADDITIONAL RECORDS CITED:
 R₁=PHASE 4 PLAT OF CRAFTSMAN VILLAGE DOC.#3321782



BASIS OF BEARING: HELENA LOW DISTORTION PROJECTION
 GEODETIC NORTH OBTAINED BY GPS OBSERVATIONS & OPUS PROCESSING
 DATUM: NAD83(2011) (EPOCH 2010.00)
 PROJECTION: TRANSVERSE MERCATOR
 CENTRAL MERIDIAN: W 111°57'00" (-111.95°)
 PROJECT ORIGIN LATITUDE: N 46°30'00" (46.5°)
 SCALE FACTOR AT CENTRAL MERIDIAN: 1.000191
 FALSE NORTHING: 100,000.00 IFT (30,480m)
 FALSE EASTING: 200,000.00 IFT (60,960m)

STAHLY ENGINEERING & ASSOCIATES
 PROFESSIONAL ENGINEERS & SURVEYORS
 www.seoeng.com

2223 MONTANA AVE. STE. 201
 BILLINGS, MT 59101
 Phone: (406)601-4055
 Fax: (406)601-4052

3530 CENTENNIAL DR.
 HELENA, MT 59601
 Phone: (406)442-8594
 Fax: (406)442-8557

851 BRIDGER DR. STE. 1
 BOZEMAN, MT 59715
 Phone: (406)522-8594
 Fax: (406)522-9528

CRAFTSMAN VILLAGE PHASE 8, 9, & 10 SUBDIVISION

COUNTY: LEWIS & CLARK	1/4	SEC	T	R	1/4	SEC	T	R
	XX	26	10N	3W	XX			
PRINCIPAL MERIDIAN, MONTANA	XX	35	10N	3W	XX			

FIELD: --
 DRAWN: JTF
 CHECKED: GDW
 DATE: 09-2022

SHEET
2 OF 5