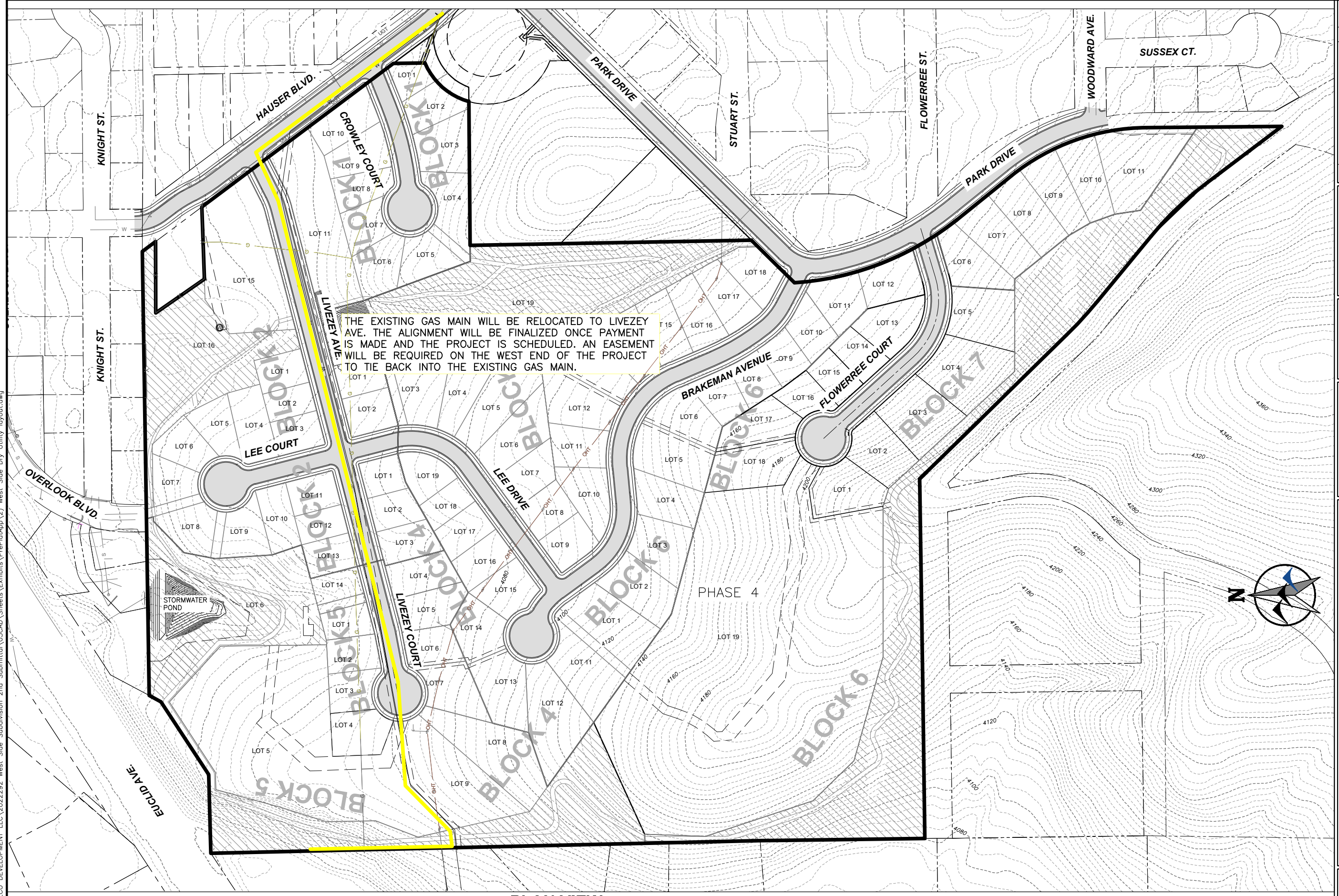


K:\Helena\ECO DEVELOPMENT LLC\2022292 West Side Subdivision 2nd Submittal\05CAD\Sheets\Exhibits\PrePlanApp(2) West Side Dry Utility layout.dwg



THE EXISTING GAS MAIN WILL BE RELOCATED TO LIVEZEY AVE. THE ALIGNMENT WILL BE FINALIZED ONCE PAYMENT IS MADE AND THE PROJECT IS SCHEDULED. AN EASEMENT WILL BE REQUIRED ON THE WEST END OF THE PROJECT TO TIE BACK INTO THE EXISTING GAS MAIN.



PROJECT: 2022-292		NO.	REVISION DESCRIPTION	BY	DATE
DESIGNED: JMF	△				
DRAWN: DCT	△				
CHECKED: DDP	△				
APPROVED: JMF	△				
DATE: AUGUST 17, 2022					
 ENGINEERING 1275 MAPLE STREET, SUITE F HELENA, MT 59601 (406) 443-9962					
ECO DEVELOPMENT, LLC WEST SIDE WOODS MAJOR SUBDIVISION PROPOSED SITE PLAN					
SHEET NO. 1					