



**HELENA OPEN LANDS MANAGEMENT
ADVISORY COMMITTEE
AGENDA
January 10, 2023**



GENERAL MEMBERS

- Grant Jackson
- Lindsay Gilstrap

CITY-COUNTY PARKS BOARD

- Ben Kuiper

HELENA CITIZENS COUNCIL

- T.J. Lehmann

CITY OF HELENA STAFF

- Brad Langsather, Open Lands Manager
- Heather Kahler, Recorder

ACTIVE PARTICIPANTS

- Helena Tourism Alliance Representative
- Andrea Opitz

PPLT REPRESENTATIVE

- Tim Lawrence

Meeting Date and Time: January 10, 2023 // 5:30 pm - 7:00 pm

Location: In Person at the City County Building Room 426 or Zoom

Zoom Link: <https://us06web.zoom.us/j/96044926800>

Call to Order

Welcome/Introductions/Visitors

Minutes Approval
December 13, 2022

HOLMAC Action Items

- Elect a new HOLMAC Chairperson

New Business

- Social Trail Discussion – Tyler Wock, Assistant Open Lands Manager
- Prescribed Burning Progress Report

- PPLT Report

Public Comment

Future Agenda Items

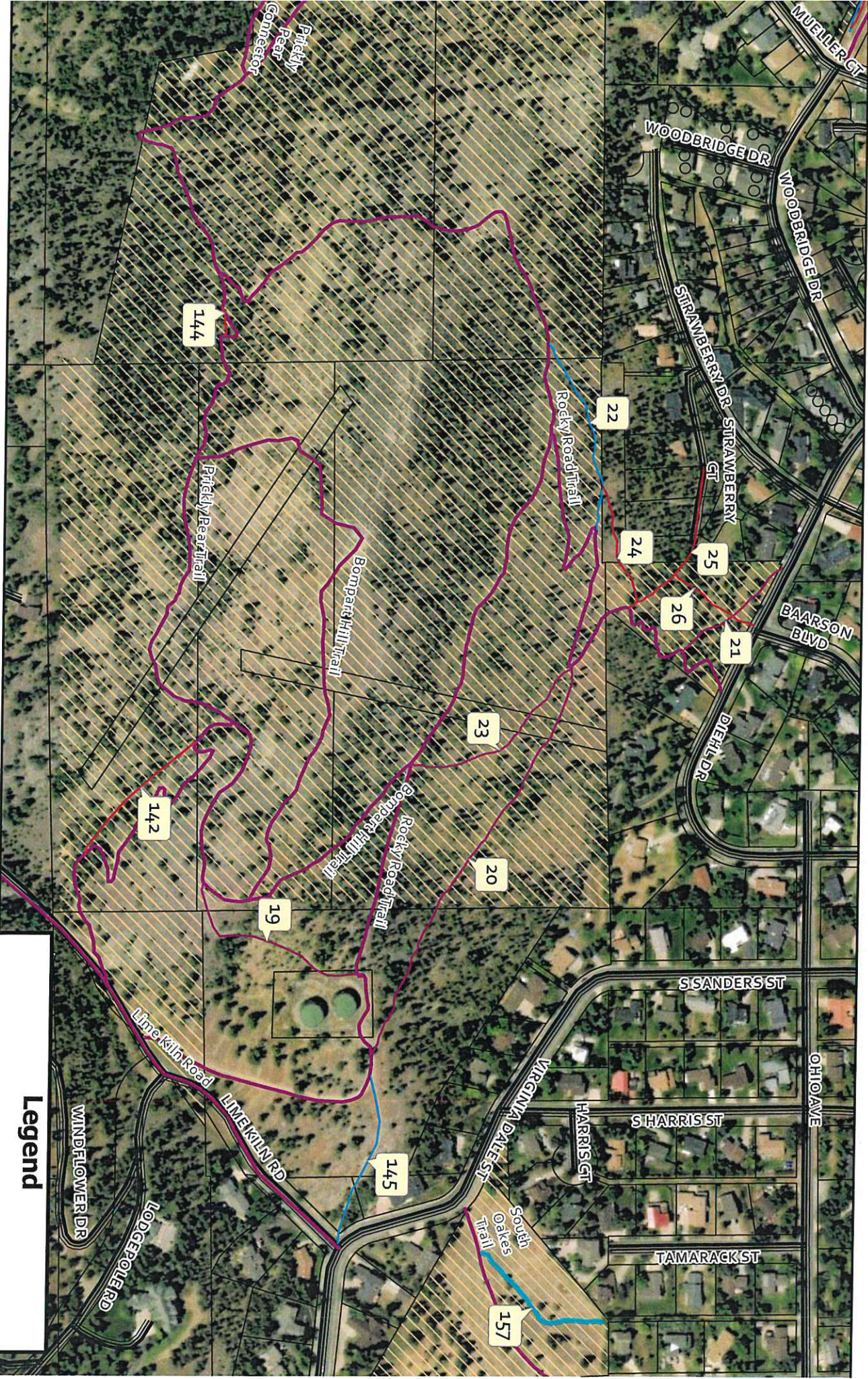
Adjournment

ADA NOTICE

The City of Helena is committed to providing access to persons with disabilities for its meetings, in compliance with Title II of the Americans with Disabilities Act and the Montana Human Rights Act. The City will not exclude persons with disabilities from participation at its meetings or otherwise deny them the City's services, programs, or activities.

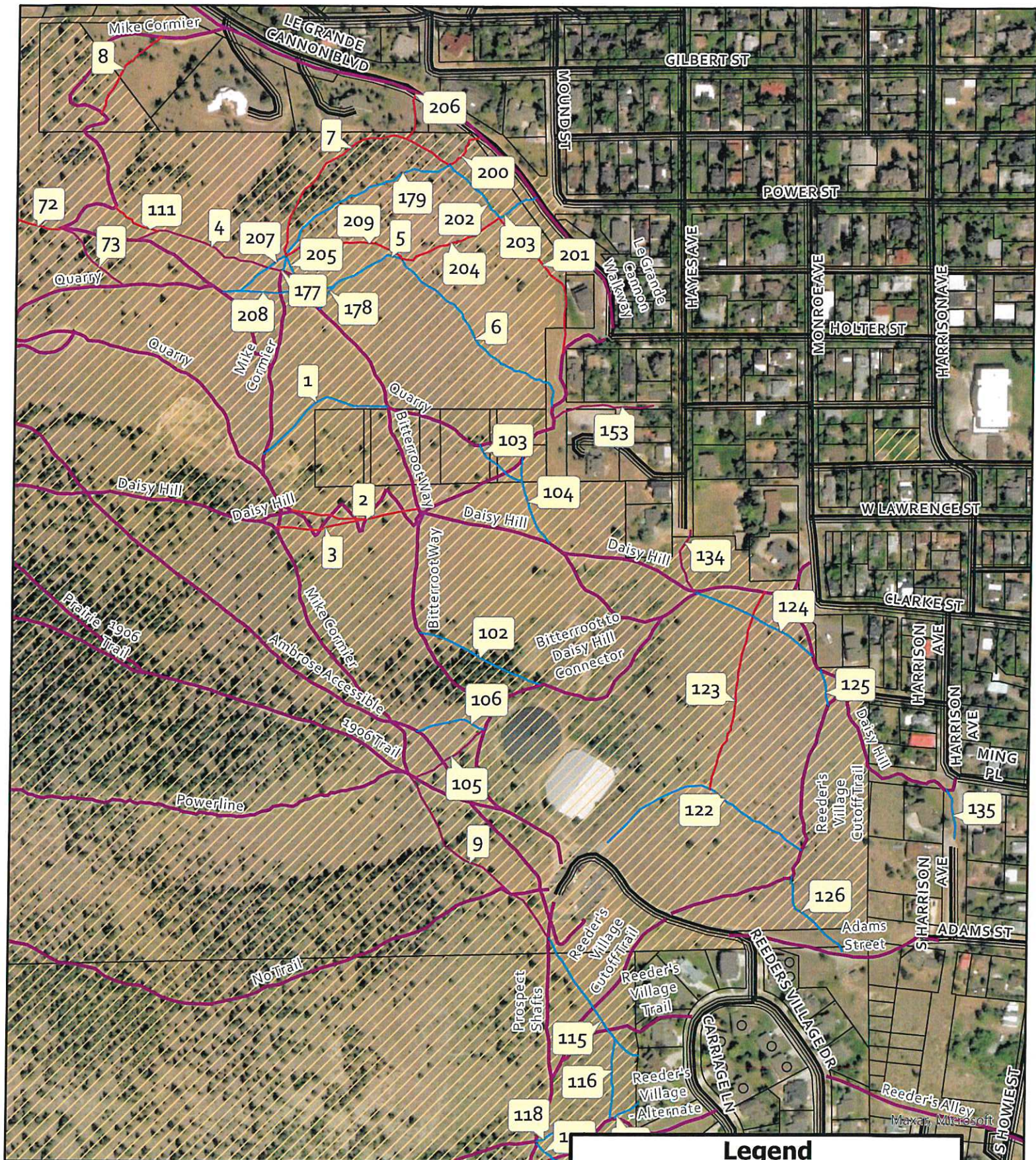
Persons with disabilities requiring accommodations to participate in the city's meetings, services, programs, or activities should contact Sharon Haugen, Community Development Director, as soon as possible to allow sufficient time to arrange for the requested accommodation, at any of the following: Phone: (406) 447- 8490; TTY Relay Service 1-800-253-4091 or 711 Email: citycommunitydevelopment@helenamt.gov, Mailing address & physical location: 316 North Park, Avenue, Room 445, Helena, MT 59623.

3ompart Hill Social Trails

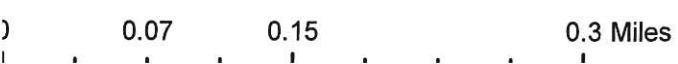


Legend

- South Hills Trails
- Action/Final
- Adopt and Map
- Keep but do not map
- Not Chv
- Roadways
- Roadways
- Helena Parks and Open Space Lands
- Helena Parks and Open Space Lands

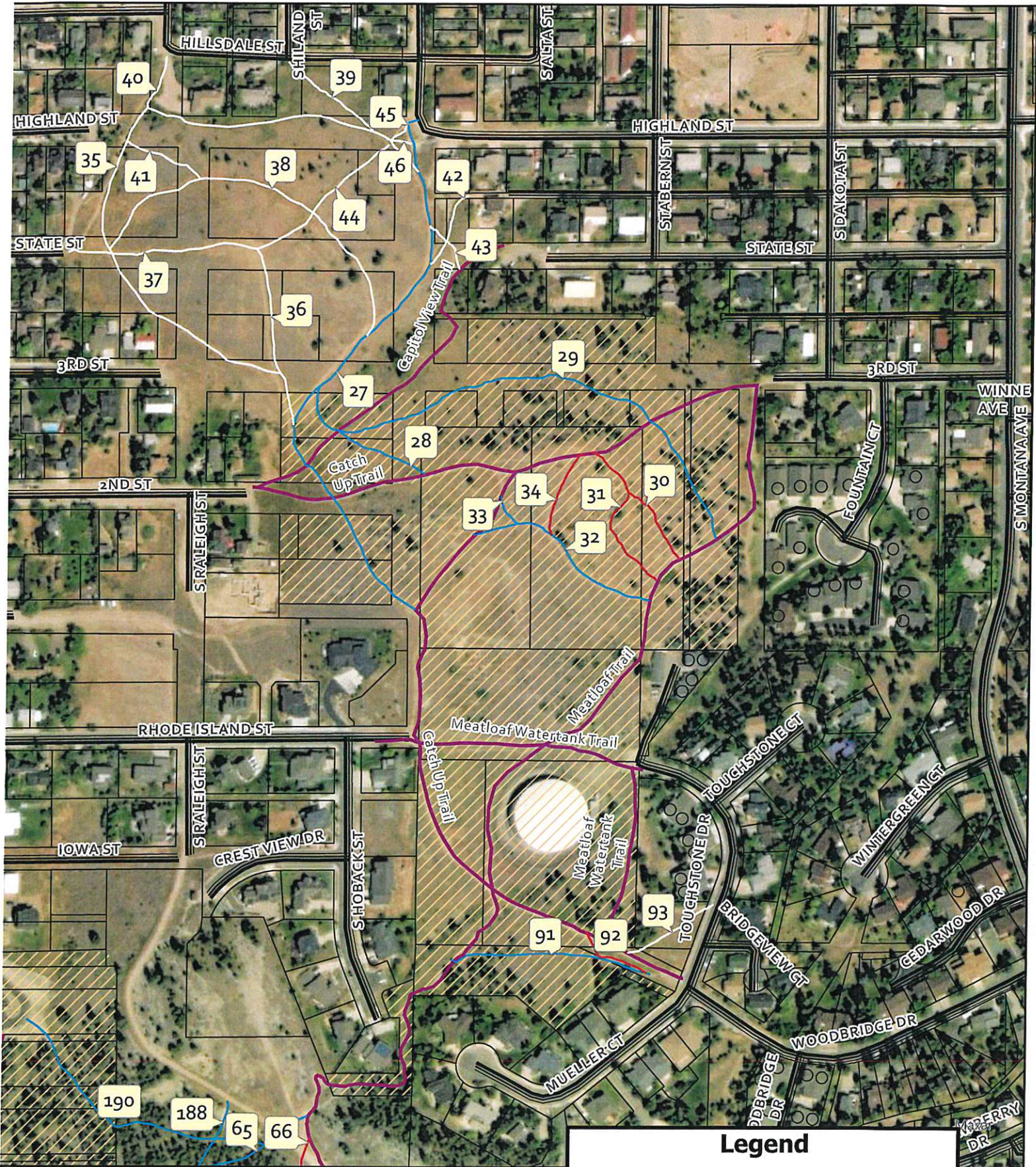


Daisy Hill Area Social Trails



Legend

South Hills Trails	Roadways
Social Trails	Roadways
Action Final	Helena Parks and Open Space Lands
Adopt and Map	Helena Parks and Open Space Lands
Close	
Keep but do not map	
Not City	



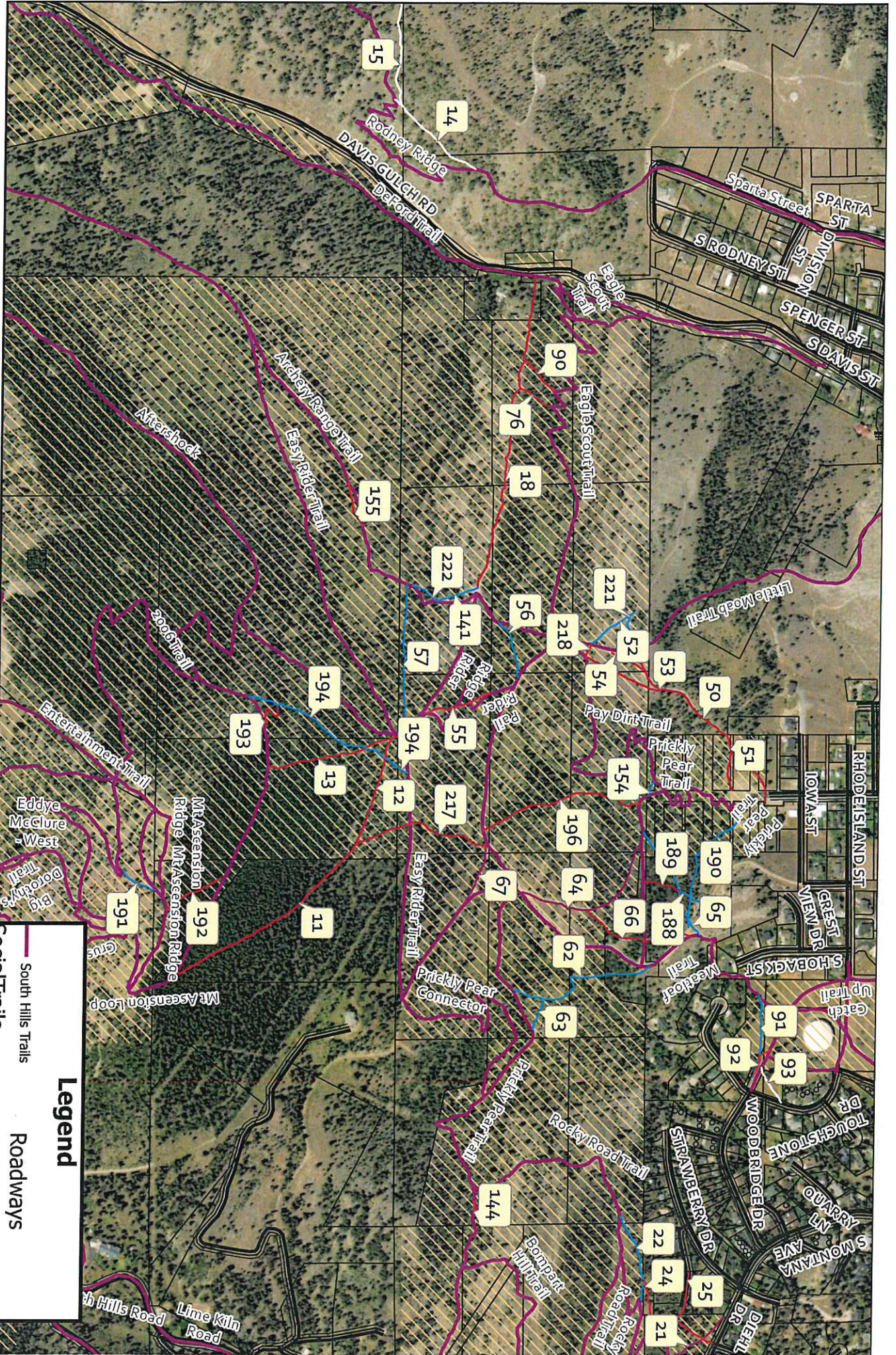
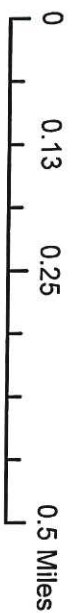
Meatloaf Hill Social Trails



Legend

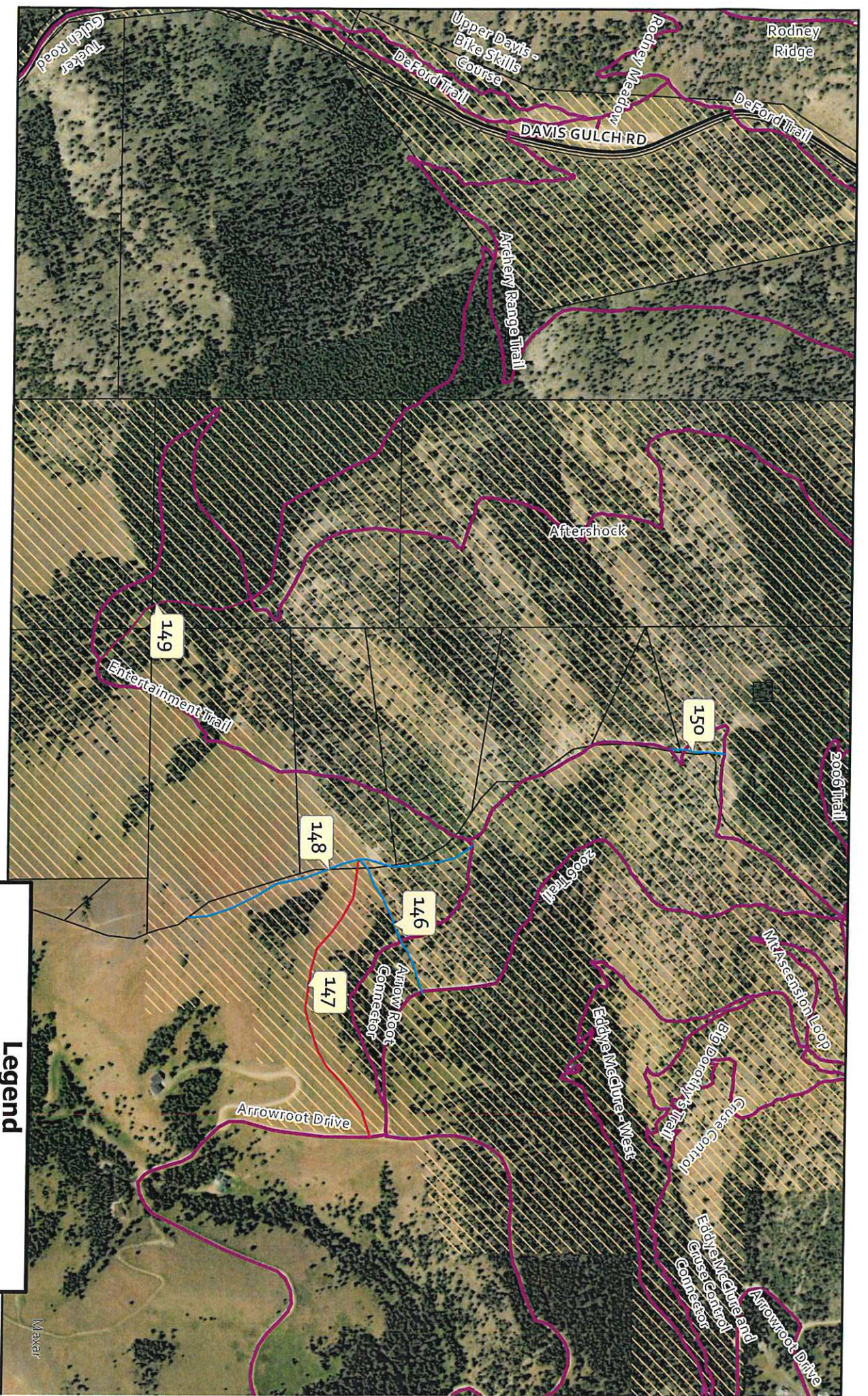
South Hills Trails	Roadways
Social Trails	Roadways
Action Final	Helena Parks and Open Space Lands
Adopt and Map	Helena Parks and Open Space Lands
Close	
Keep but do not map	
Not City	

Mount Ascension North Social Trails

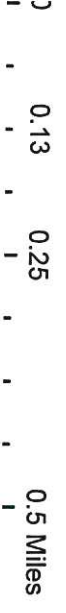


Legend


	South Hills Trails		Roadways
	Social Trails		Helena Parks and Open Space Lands
	Action/Final		Helena Parks and Open Space Lands
	Adopt and Map		Helena Parks and Open Space Lands
	Close		Not City
	Keep but do not map		



Mount Ascension South Social Trails



Legend

 South Hills Trails	 Roadways
Social Trails	 Helena Parks and Open Space Lands
 Action/Final	 Helena Parks and Open Space Lands
 Adopt and Map	 Helena Parks and Open Space Lands
 Close	 Helena Parks and Open Space Lands
 Keep but do not map	 Helena Parks and Open Space Lands
 Not City	



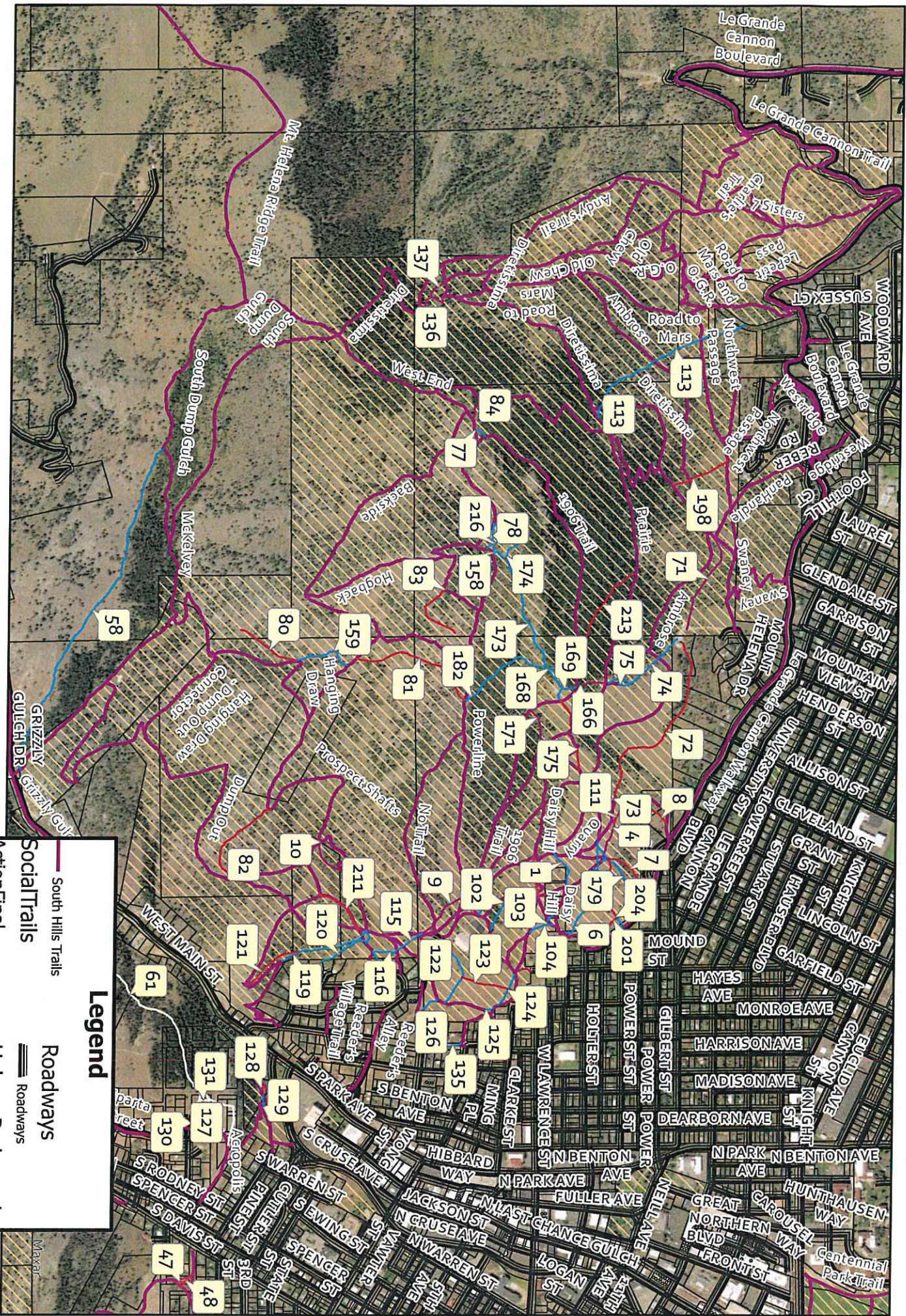
Mount Helena Social Trails

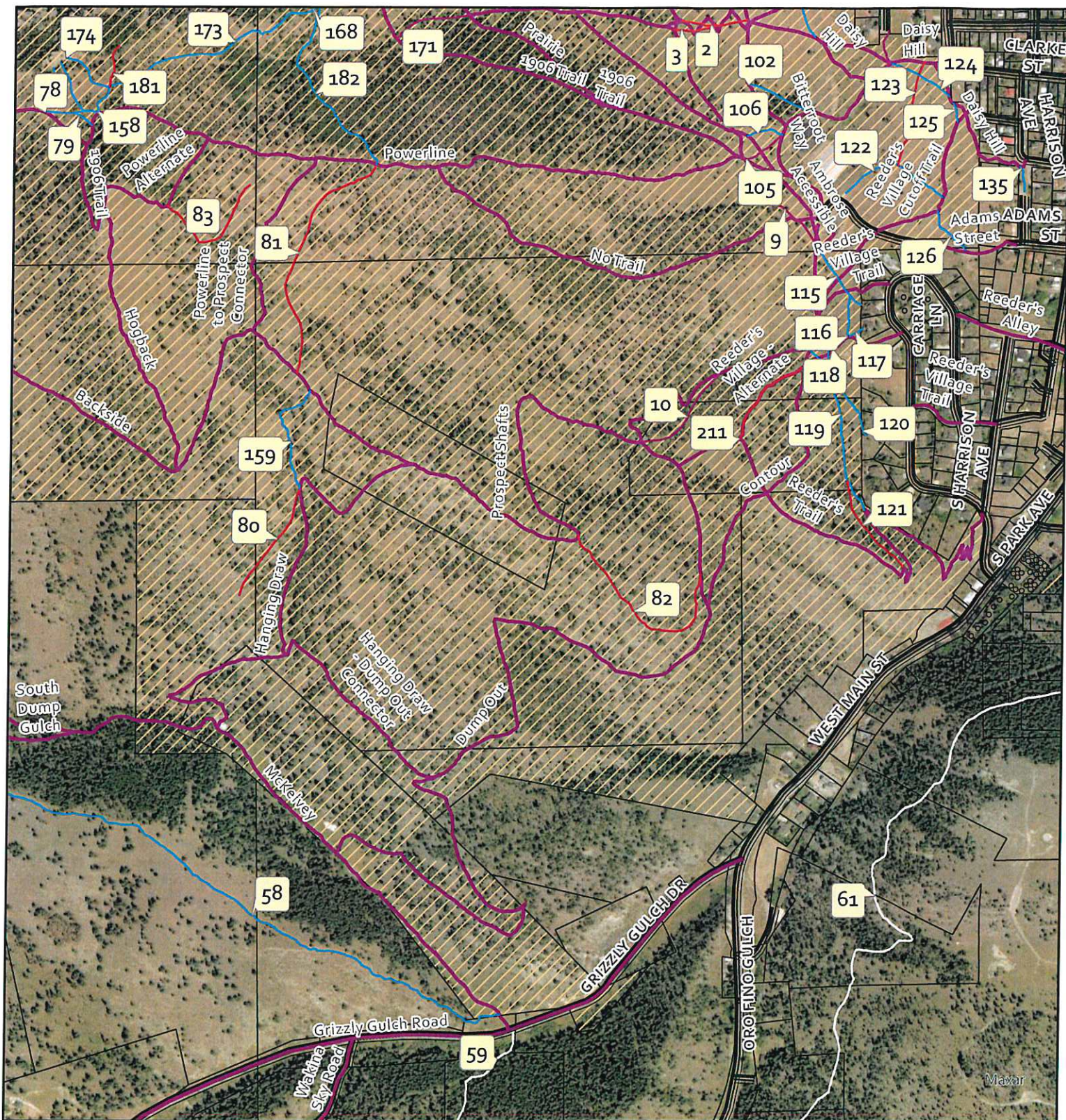
Legend

- South Hills Trails
- Action/Final
- Adopt and Map
- Close
- Keep but do not map
- Not City

- Roadways

- Helena Parks and Open Space Lands

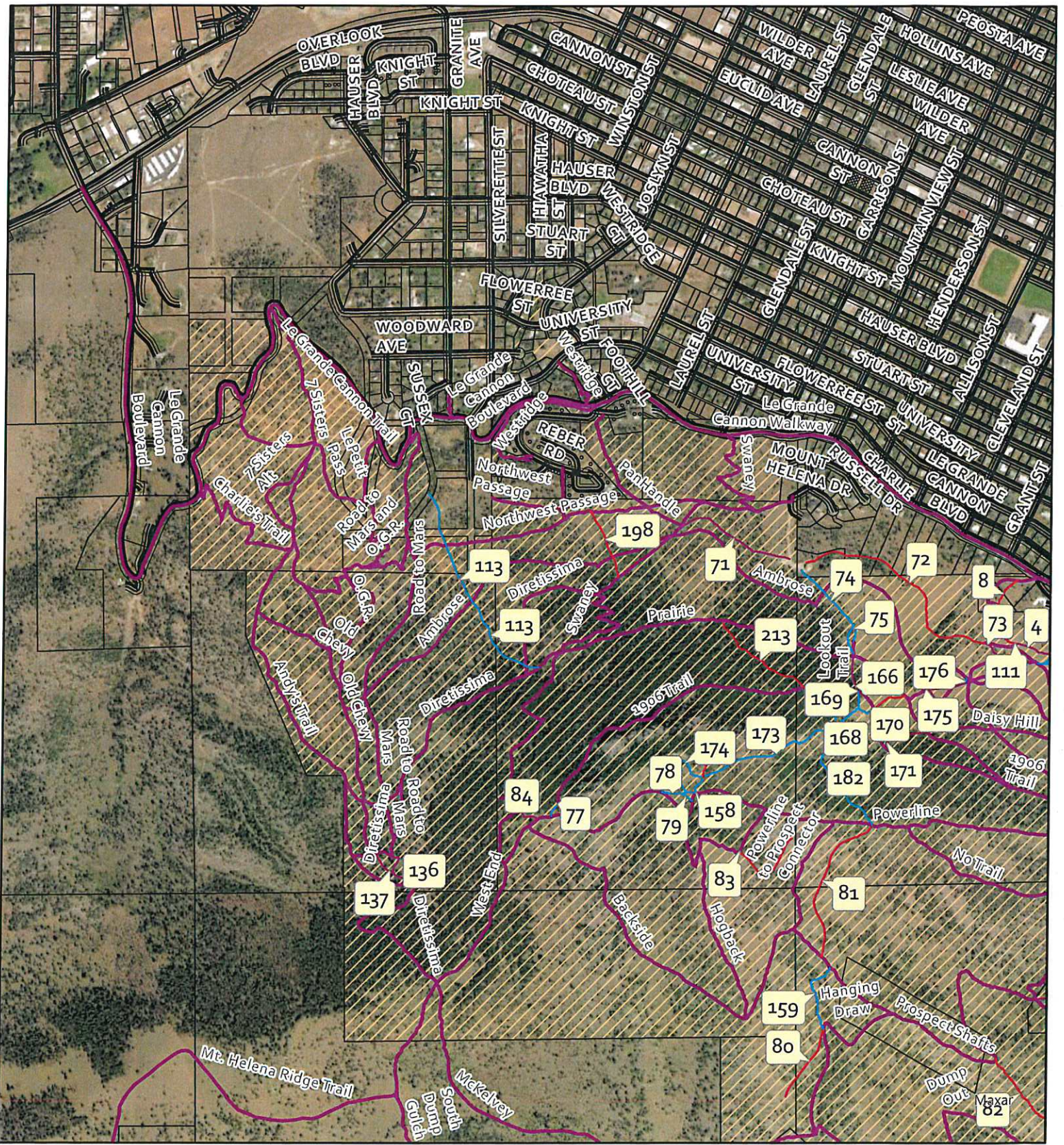




Mt Helena South East



Legend	
South Hills Trails	Roadways
Social Trails	Roadways
Action Final	Helena Parks and Open Space Lands
Adopt and Map	Helena Parks and Open Space Lands
Close	
Keep but do not map	
Not City	



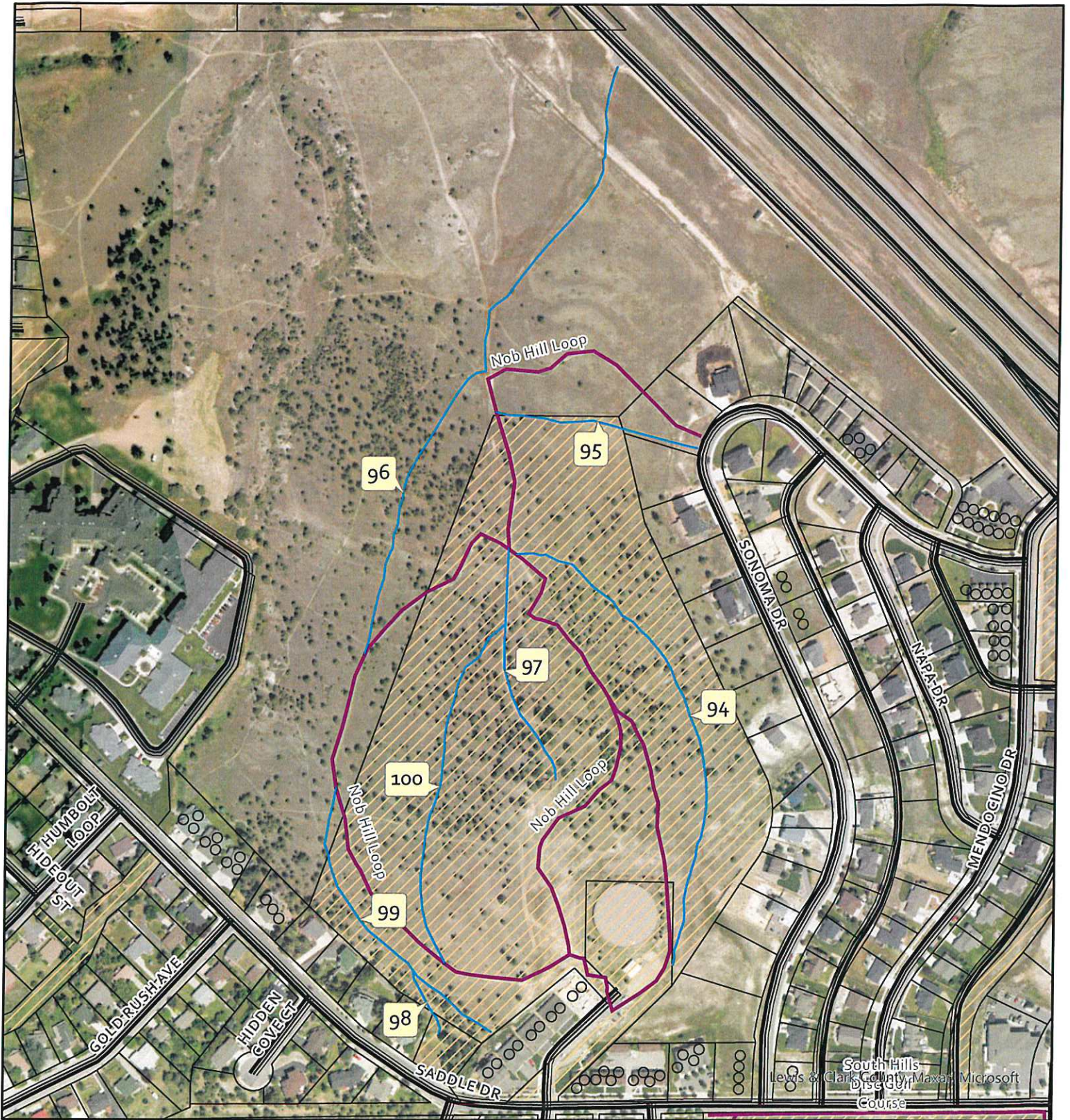
Mount Helena North West



0 0.28 0.55 1.1 Miles

Legend

South Hills Trails	Roadways
Social Trails	Roadways
Action Final	Helena Parks and Open Space Lands
Adopt and Map	Helena Parks and Open Space Lands
Close	Helena Parks and Open Space Lands
Keep but do not map	Helena Parks and Open Space Lands
Not City	



Nob Hill Social Trails



0 0.05 0.1 0.2 Miles

Legend	
South Hills Trails (3)	Keep but do not map (7)
Not City (0)	
Social Trails	
Adopt and Map (0)	
Close (0)	
Helena Parks and Open Space Lands (6)	

Social Trails Evaluation 2023

The most successful way of accomplishing trail closures is ensuring a high-quality trail that serves a similar purpose. – IMBA Trail Solutions

Purpose is to bring all trails in the system to an acceptable level of Quality and Sustainability.

There should be an information campaign accompanying all work in the future for closures to keep the public informed and hopefully on board.

Why do social trails need to be addressed? –

Social trails or informal trails are trails created by trail users rather than land managers. They are usually created by walking repeatedly on the same route as an alternative to the primary trail for several different reasons.

One of the issues social trails pose is the sheer number of trails that can be created by users. Too many trails in a similar area are not visually appealing and as the number of users are more dispersed through the landscape there is less area for wildlife to hide.

Also, social trails are usually not developed in a sustainable manor. Frequently they are steep and or on ridge tops where spring runoff and rain degrade the trail, triggering users to walk around obstacles or muddy spots causing the trail to “braid” and widen. This increases the amount of trail in the area as well as resource damage through vegetation loss and soil compaction.

Usually unmapped, social trails can also be confusing to those not familiar with the area.

Table Key

Recommended Action (ActionFinal)

Close - Take action to close the trail to attempt to get users to stop using the trail.

Adopt and Map – Adopt the trail into the trail system with a plan for bringing it up to a quality standard, installing signage and mapping.

Keep and do not map - This is reserved for trails that we feel closing would be unsuccessful and bringing it to our quality of standard would not be feasible. These are not system trails but trails that closing without a viable alternative would be very difficult. These could become system and mapped trails in the future or transversely could be closed in the future as the higher priority trails are closed. The trouble with this determination is that it can lead to confusion by trail users.

Note - Trails “Kept but not mapped” should be evaluated on a routine basis to verify if assumptions were correct and if actions need to be taken to close or give an alternate/reroute created.

Closing/Adoption Notes (ActionNotes)

Notes on closing or adopting the trail. Examples are foreseeable difficulties with closing or what actions adoptions would require.

Priority

Priority for completing the action. 1-5, 5 carrying the highest priority and 1 the least.

Amount of Use (AmountUse)

An educated guess of how much use a trail gets by the amount of wear.

Sustainability

Notes on how sustainable the trail is.

Private

Does the trail cross private property, yes or no.

Reason

Approximate reason of trails existence.

Alternative exists

Is there a quality alternate to route people on?

FID	NAME	Action/Map	Action/Notes	Priority	Private	Amount/Use	Sustainability	Reason	Alternative/Exist
4	Mike Cormier Quarry Trail Connector	Adopt and Map	Keep open as very difficult to close based on use.	1	No	Heavy	Fair		Continued use of Old Ambrose. Also a natural extension of Quarry to Mike Cormier
9	Mike Cormie	Adopt and Map	Add to the system as well established and logical. Adding to the Mike Cormier trail	1	No	Heavy	Fair to Good	Direct Route from Parking lot up to powerline 1906, less direct but similar distance.	Yes but still keep
10	Prospect Shafts Alternate	Adopt and Map	Adopt and map as established and extremely difficult to close. Possibly the main route.	1	No	Heavy	Fair, there is drainage and	Existing Road that has been used as a trail for some time.	Yes but keeping
19	Bompart Social 1	Adopt and Map			No				
20	Bompart Social 2	Adopt and Map			No				
21	Diehl Social 1	Adopt and Map			No				
23	Bompart Social 4	Adopt and Map			No				
47	Little Moab Social 1	Adopt and Map			No	Moderate/Heavy	Fair, might need some extra sustainability		
64	Pricky Pear Alternate	Adopt and Map			No				
67	Easy Rider Connector	Adopt and Map			No				
71	Old Ambrose	Adopt and Map	This is a popular trail. Has Signage at Swaney as the Old Ambrose Trail. Somewhat redundant but unlikely to close.	1	No	Moderate/Heavy	Fair	Historic Trail from the water tank.	No
73	Mike Cormier Quarry Connector 2	Adopt and Map	Adopt until an alternate is completed. There could be a reroute done during the Feaver Trail reroute .	1	No	Heavy	Fairly steep but could be brought to an acceptable	This exist because ther is not an easy way to get to quarry trail from Mike Cormier, probably should have been created with Cormier.	No however one could be create.
84	Prairie West End Connector	Adopt and Map	Should be brought to an acceptable level. Might require some minor reroute and probably a full retreat. To be evaluated as to extent.	1	No	Moderate/Heavy	Fair	Cut off as a short cut to the summit. Is a significant shortcut.	
105	Bitterroot Way and 1906 Connector	Adopt and Map	There is a picnic table and a bench on this trail. I do not believe it will be feasible or prudent to close. I believe it should be mapped and brought in as a system trail. Concerns of convoluted map.		No	Moderate/Heavy	Ok	Natural connector coming from lower Daisy area.	
134	Daisy Hill Hayes Ave Connector	Adopt and Map	This trail sees a fair amount of use. I have seen users park at the end of Hayes Ave to use it to access the system. Most likely difficult to close.	1	No	Moderate	Poor, steep and through a gully.	Must exist as a neighborhood trail.	No
136	Road to Mars Top	Adopt and Map	This is pretty heavily used and one of the accepted routes in the area. Should be added as without it things get confusing on diretissima, this will be Road to Mars. This will need work to bring to an acceptable level of sustainability.	1	No	Moderate/Heavy	Ok	Part of the trail network	Yes but never used
137	Old Chevy Top	Adopt and Map	Part of the trail system as it stands. This area might require some thought and work but for now I believe this should be accepted for now.	1	No	Moderate	ok	Extension of the old chevy road.	Yes
149	Entertainment Original	Adopt and Map	This is the original entertainment trail prior to the "woods" reroute. It is in the system using signage and should be adopted as such.	1	No	Moderate	Poor/Ok	The original Trail	Yes, the Woods alternate.
153	Hayes Aly to Quarry Connector	Adopt and Map	Appears to cross. Unsure of Amt of use	4	Yes, Very little	Evaluate			
166	Water tank Trail Upper	Adopt and Map	Very established direct route between Prairie and 1906. Has some	1		Heavy	Poor but some measures have been taken to minimize issues.	continuation of lower trail.	No
171	Daisy Hill Top	Adopt and Map	Very difficult to close and feels like is a continuation of the Daisy Trail and assume this is what the user base assumes as well.	1		Heavy	Fall Line. Poor but measures have been taken to mitigate.	Daisy hill is a historic "direct trail" to 1906/Prairie/Ambrose trails. This portion is a continuation of Daisy Hill.	no
2	Daisy Hill Switch Cut 2	Close	Carsonite signs ripped out and destroyed. Might have be difficult to close. Will require effort, maybe import a lot of slash or heavy machinery.	5	No	Moderate	Very Poor	Existed before reroute and previous attempts to close have been unsuccessful.	
3	Daisy Hill Switch Cut 1	Close	Carsonite signs ripped out and destroyed. Might have be difficult to close. Will require effort, maybe import a lot of slash or heavy machinery.	5	No	Moderate	Very Poor	Existed before reroute and previous attempts to close have been unsuccessful.	
7	East Legrade Ditch Trail 1	Close	If we are going to be leaving the trail just to the west then this should be closed. Needs to be evaluated as best closure measures but slash and signage might do it.	4	No	Low	Not sustainable on the upper portion, lower	Neighborhood trail, fairly direct, might be from the house below it.	Yes just east, a social we will be keeping but not mapping.
8	Mike Cormier Cut	Close	Might be difficult to close unless there is a trail change to mike cormier from Legrande in which case this will be closed as a part of the other closure.	4	Yes, Feaver	Light/Moderate	Poor	Direct trail	Yes, primary trail
11	Medley's Cut	Close		4	Yes, Medley	Moderate	Poor		
12	Medley's from 2006	Close		4	No, but				
13	C Trail Direct	Close	Close using mostly signage. Might be difficult because of size and leaving the one it crosses open.	3	No	Light/Moderate	Poor	Historic trail that took you directly to the "Carroll C".	
18	Ridge Rider continued	Close	This was closed 2021 with a fair amount of success.		No				
24	Bompart Social 5	Close	Low priority as will be a part of the Diehl Drive Access reroute overhaul.	2	Yes	light/moderate	poor	Neighborhood access to Rocky Road and further West.	yes
25	Bompart Social 6	Close	Crosses Private	2	Yes				
26	Diehl Social 2	Close	Close as most fall line of the Diehl Drive Trails but as a low priority. This area should be evaluated for a better trail plan	2	No	Low/Moderate			
30	Meatloaf Social 3	Close	Fall line, poor shape. Close, recommend signage and potentially slash.		No			Direct route to destination.	Yes
31	Meatloaf Social 4	Close	Fall line, poor shape. Close, recommend signage and potentially slash.	3	No	Light	Very Poor	Direct route to destination.	Yes
34	Meatloaf Social 7	Close	Likely difficult to close. Fairly fall line in nature.	2	No	Light	Poor	Direct route to Meatloaf Hill along the old Quarry/Excav site.	Yes
48	Little Moab Social 2	Close	Might be difficult to close. Signage might be enough, not much slash to use to cover.	3	No	Light/Moderate	Poor	Unsure why this exists.	Yes
49	Little Moab Social 3	Close	Might be difficult to close. Signage might be enough, not much slash to use to cover.	3	No	Light/Moderate	Fair	Most likely an extension of a neighborhood trail.	Yes
50	Beattie TH to Little Moab 1	Close	Effectively closed by fencing in 2019. Monitor for continued use.	1	Yes	light	Poor	This was a more direct route to the top Eagle Scout junction.	Yes
51	Beattie Social 2	Close	This trail was commonly used prior to the ne Beattie TH/Parking Area. Unsure of amount of use with fencing involved. Monitor and if it is found there is frequent use, use closing mitigation techniques.		No			This trail was commonly used prior to the ne Beattie TH/Parking Area. More direct to the top of Eagle Scout area.	no
53	Little Moab Social 6	Close	Effectively closed by fencing in 2019. Monitor for continued use.	1	Yes	light	poor	This was a more direct route to the top Eagle Scout junction.	no
54	Little Moab Social 7	Close	Effectively closed by fencing in 2019. Monitor for continued use.	1	Yes	light	poor	This was a more direct route to the top Eagle Scout junction.	no
55	Pail Rider Fall Line	Close	Has been a continual effort to close and has moderate success. Monitor for effectiveness of previous closure for now.	2	No	Light	Poor	Old road, rerouted.	yes, the reroute
66	Pricky Pear Fall Line	Close	This might be a difficult trail to close however its proximity to Easy Rider and the other trails near by should allow it to be done. Signage and slash are a good start to closing however a machine could be utilized as there is access from Raleigh	3	No	Light/Moderate	Ok/Poor	Trail appears to have existed for some time and is possibly a mining road to the colaped pit near the top.	Yes, Easy Rider
72	Old Ambrose Private	Close	Crosses private property and should be closed. This will be a difficult trail to close. Has been closed with extensive measures multiple times. Will require extensive measures once again and continual monitoring.	4	Yes	Moderate/Heavy	Good	The original Ambrose trail.	Yes, New Ambrose above.
76	Eagle to Ridge Rider Cut	Close			No				
80	Hanging Draw Contour	Close	Close. This is a confusing trail that is frustrating for those who use it to find it is only a dead end. Carsonite might be enough.	3	No	Light/Moderate	Fair	Usure why this trail developed. It Doesn't lead to a designation and just dead ends.	
81	Prospect Powerline Alternate	Close	Signage and slash if available to start. Might be difficult to close as has been in existence but is redundant by the trail above it and should be closed. Unsure why this trail was not kept and instead one above was created.	4	No	Light/Moderate	Fair	Historic trail as is that adjacent N of Powerline, believe this is an exention of that trail.	
82	Prospect Dump out Alternate	Close	This trail was closed with relative success in the past. Evaluation of best closing measures will need to done prior to engaging in closure.		No			Direct Route from Dump Out to Prospect Shafts, mostly likely a down trail.	
83	Powerline Alternate Fall Line	Close	Proper signage and making sure the Powerline Alt trail bed is clear will do much to close this trail. Disguising slash and signage would be next measures depending on if it still gets use.	3	No	Light/Moderate	Poor	I do not know why this trail exists other than the powerline alternate is confusing.	
90		Close			No				
92		Close	Redundant. Might be difficult to close however there are two trails that lead to the same spot very near by. Should be attempted to close.		No			Unsure	Yes
111	mike corm jump up	Close	Redundant trail and should probably be closed however it might be difficult. This is not heavily used	2	No	light	fair	More direct to Quarry	Yes, the primary trail.
121		Close	This might be difficult to close. However it is confusing at its start which of the trails is the actual trail. At a minimum this trail should be closed and the lower trail at the switchback left for now.	3	No	light/moderate		This could have been a neighborhood trail before the system trail was completed unsure but does not feel to be needed.	
123	Daisy Hill Direct North	Close	This trail gets light use but poses the challenge of being in the open for closure and runs the risk of closure being ignored and users walking just beside the closed trail. Recommend signage at first then slash.	3	No	Light	Poor	Exists as a route from top of Daisy Hill to the Daisy Hill/Monroe Street connector for Neighborhood/Downhill walkers.	Yes but less direct.
128		Close	Might be difficult to close		No			Direct route up to Acropolis	
142		Close	This will be difficult to close as it was the original trail and has a defined footprint. It is fall line in nature and	2	No	Moderate	Poor	Original trail and is still used as is most direct (downhill travel)	Yes
144		Close			No				
147	Arrowroot Social	Close	I have not noticed this trail and is from data from PPLT. This should be monitored for use and measures taken to close if it is an issue.	2	No				

FID	NAME	Action/Final	Action/Notes	Priority	Private	Amount/Use	Sustainability	Reason	Alternative/Exist
155		Close	This is not popular and is most likely used by those that do not know what is the main trail. Signage might be enough to close.	3	No	Light/Moderate		Unsure why this exists.	Yes
170		Close	Unsure how much this trail is used. Monitor use and if more use develops take actions to close.	1		light	Fall line, Very Poor	Direct Trail between Prairie and 1906. Maybe an Exit from the H trail.	No
175		Close	This doesn't get a lot of use. This will have to be re-evaluated as what the best closure measures would be needed.	4		Light	Very Poor	I believe was the original trail.	Yes, the trail reroute
181	Above the Cliffs	Close	This should be closed. I believe disguising the entrance with slash and the like will be an adequate closure.	2		Light	fair	Exists as a way to get above the cliffs and leads to an interesting area however users can get to this	no
189		Close	Trail does not appear to get a lot of use and is fairly redundant. Should be attempted to close.	3		light	ok	Unsure. Fun trail for those that like to explore? Game trail that has developed with more use?	yes
192		Close	Monitor, does this actually get use?	2		Light	Poor	Appears to be a cut off to the top. Possibly a game trail.	No
193		Close	Close or evaluate as the better route and close the top of the other trail instead.					User built trail that is less direct for the steep section at the top. Appears to be more used and somewhat more sustainable than the one further west.	yea
196	Prickly Pear Easy Rider Direct	Close	Fair amount of use. Not sustainable. Most likely difficult to close as is probably someone's favorite trail. Minimal effort to close and see results.	2		Moderate	Poor	Direct route from lower prickly pear to Easy Rider. One of the more direct trails to the top.	Not really other than Prickly Pear Alt
198		Close	This is the route the contractors took in to the chipping unit, appears to be getting more use. This was successfully closed prior and might go away on its own. Closing will just be monitoring for now and possibly signage in the future.	2		Light	Poor	Old social. Believe this is where contractors went in for chipping. Used because of efficiency	
200	East LaGrande Jump Up 2	Close	Might be difficult to close but is not used very much. Mechanical at the start from LeGrand, signage/slash at the top.	4		low	Not sustainable	Just another direct route from Legrande to the ditch trail at the top.	Yes further SE, there is a trail similar to this that will be left not mapped.
201	East Legrande Ditch Trail 3	Close	This is lightly used and should be closed as it goes right up next to the house south of it. Because it is an old road and on the ditch trail it might be difficult. Signage might be the best course of action	3	No	Low	Good	Neighborhood hiker/dog walker trail	yes, those being kept to the north.
204	East Legrande Overlook Jump Up	Close	Close. I believe this could be closed as there is little use and would not be sustainable. However might pose some difficulty.	3	No	Low/Moderate	Not	Exists as a direct route to the overlook/destination point. I believe this could be closed.	Yes but not as direct.
206	East Legrande Jump Up 1	Close	Might be difficult to close but is not used very much. Mechanical at the start from Legrande, signage/slash at the top.	3		low	Not sustainable	Just another direct route from Legrande to the ditch trail at the top.	Yes further SE, there is a trail similar to this that will be left not mapped.
209	East Legrande Overlook	Close	There is a more used option (Jump up 2) that would sees more use and therefore will be the better option to keep here.	3	No	Low	Poor	Destination	Yes
211	Reeders Village Alternate	Close	System Trail Damaged extensively in the 2022 flash flood. This should probably be closed or will require extensive work to bring back to an acceptable level	4	No	Light/Moderate	Poor	exists as a cut up, was prior to contours creation and I do not believe gets a lot of use.	yes
213	1906 Prairie Connector Lower	Close	Mostly a game trail. Monitor for increase in use.	1		Very Light	Ok	continuation of historic trail that has lost use.	
217	Medley's Cut	Close	Steep but gets a fair amount of use. Most likely difficult to close.	4	Yes, Medley	Moderate	Poor	Direct trail. Shortest to top.	Yes but not direct
218	Beattie Social 1	Close			Yes				
1	Mike Cormier Quarry 3	Keep but do not map	Although poor sustainability this would be difficult to close as is a logical connection between Mike Cormier and Quarry and there would be another trail that would develop next to it. Could be considered for mapping and could be named Quarry.	1	No	Moderate/Heavy	Poor		
5	East Legrande Overlook Jump Up 2	Keep but do not map	This appears to be the most commonly used route to the overlook. Although it has poor sustainability this is the trail that would be hardest to close in the area and if we are keeping one, this should be it.	1	No	Moderate	Poor	Destination	This will be it
6	East Legrande Overlook	Keep but do not map	Although this trail does not get heavy use it takes you to a destination that has a great view of the city. Some form of this trail will always exist. We should keep it for now and think about creating a similar trail to get to this vantage.	1	No	Moderate	Not good	Destination	No
22	Bompart Social 3	Keep but do not map	This is a popular trail going east up to Rocky Road from the Diehl Drive access. Should be evaluated as a part of the Diehl Drive access overhaul.		No	Moderate to Heavy	Fair		
27	Hoback Meatloaf Access	Keep but do not map	One of the more popular trails on Meatloaf/Sugar loaf hills. This would be very difficult to close however crosses private property and could become an issue in the future.	1	Yes, Humi	Heavy	ok	A good route from the Jefferson School area of Broadway to access single track quickly. Also fairly direct route to Mount Ascension area.	
28	Meatloaf Social 1	Keep but do not map			No				
29	Meatloaf Social 2	Keep but do not map			No				
32	Meatloaf Social 5	Keep but do not map	Difficult to close with large foot print and appears to have been here for a long time.		No			Appears to be an old road.	No
33	Meatloaf Social 6	Keep but do not map	Would be hard to close if keeping that on its south.		No			Typical triangle trail.	
52	Little Moab Destination 1	Keep but do not map	I am unsure how much use this gets anymore. Should probably monitor but I think this will be a difficult trail to close.	1	No		Poor	This is a destination trail. Brings you to the top of this small hill.	
56	Easy Rider Archery Range Social	Keep but do not map	This would be difficult to close as some version of this trail would exist even if we closed it successfully.		No			Cut across between Easy Rider and Archery Range Typical triangle trail.	Yes
57	Easy Rider Road to Archery	Keep but do not map	This is sometimes used as an access route.	1	No	Light	fair	Looks like it is an old mining trail/road.	Yes
58	Upper Decker	Keep but do not map	Will be difficult to close as you have a tendency to want to take it off of the South Dump Trail. Also is on USFS.	1	No	Moderate	OK	Ridge Trail. Historic, natural tendency to go that way if your on the South Dump Trail.	No
62	Bompart to Easy Rider	Keep but do not map	Most likely difficult to close. More direct connector to the Bonpart area/ Prickly Connector. Single track feels better to walk on than Meatloaf/Easy Rider "Roads".		Yes	light/moderate	ok/poor	More direct connector to the Bonpart area/ Prickly Connector. Single track feels better to walk on than Meatloaf/Easy Rider "Roads".	yes, easy rider/meatloaf
63	Bompart to Easy Rider Fork	Keep but do not map		1	No	Light/Moderate	Ok	Typical triangle trail for this social trail to Prickly Pear.	No
65	Prickly Pear Meatloaf Neighborhood	Keep but do not map	Fairly popular trail. This trail crosses private. Will be difficult to close. For now leave as is and do not close. Evaluate in the future or if this lot is sold or developed.	1	Yes	Moderate/Heavy	Fair	Fairly popular trail connecting the Meatloaf Area to the Pay Dirt area. Assume is an East west trail to traverse Mt Ascension.	
74	Viewpoint Watertank 1	Keep but do not map	This was left as a social trail and some sustainability measures were taken. It is in rough shape now however closing will be difficult. Best action would be to leave for now and think of more sust measures or creating a trail to provide an alternate.	2	No	Moderate	Very Poor	Direct Route up to Ambrose/Praire/1906 form Neighborhood area	No
75	Viewpoint Watertank 2	Keep but do not map	part of the adjacent trail, see notes for it.	1	No	Light	Poor	Unsure. This may have been the original trail.	Yes
77	1906 West End Connector	Keep but do not map	This is heavily used although it is steep and loose. I do not believe however closing would be possible. Both this trail and the primary need work.	1	No	Moderate/Heavy	Poor	Shortcut up to 1906 heading downhill from the West End Trail. Typical triangle trail that inevitably develops.	Yes
78	1906 Powerline 1	Keep but do not map	Some for will probably exist forever	1	No	Moderate	Fair	Connector Trail	Yes
79	1906 Powerline 2	Keep but do not map	Remote, difficult to close as has been a trail for quite some time.	1	No	Light/Moderate		Connector Trail	Yes
91		Keep but do not map	Heavy footprint, moderate use lead to difficult to close however should be evaluated if it should be closed in the future.	1	No	Moderate	Fair	Appears to be an old road. Direct route to meatloaf trail and no elevation loss.	Yes but has elv loss.
94		Keep but do not map	All of the Nob Hill social trails will be staying for now as the primary user being those that live in the neighborhood making closure difficult.		Yes				
95		Keep but do not map	All of the Nob Hill social trails will be staying for now as the primary user being those that live in the neighborhood making closure difficult.		Yes				
96		Keep but do not map	All of the Nob Hill social trails will be staying for now as the primary user being those that live in the neighborhood making closure difficult.	1	Yes	Moderate/Heavy	Ok		
97		Keep but do not map	All of the Nob Hill social trails will be staying for now as the primary user being those that live in the neighborhood making closure difficult.	1	No	Moderate/Heavy	Poor	Old Road to the Communication tower	
98		Keep but do not map	All of the Nob Hill social trails will be staying for now as the primary user being those that live in the neighborhood making closure difficult.		No				
99		Keep but do not map	All of the Nob Hill social trails will be staying for now as the primary user being those that live in the neighborhood making closure difficult.		Yes				
100		Keep but do not map	All of the Nob Hill social trails will be staying for now as the primary user being those that live in the neighborhood making closure difficult.		No				
102		Keep but do not map	Closing would be difficult as trail is well defined and the alternative is steep and have to go up hill then down hill.	1	No	Moderate/Heavy	Fair	Connector to Bitterroot Way, Neighborhood trail. Assume for loop hikers.	Yes, but steep
103	Quarry to Bitterroot Way Connector	Keep but do not map	Created as part of a loop trail by neighborhood walkers. Difficult to close as is on open ground and has been there for some time.	1	No	Light/Moderate	Ok	Neighborhood/Loop Trail	No
104	Daisy Hill to Bitterroot Way Connector	Keep but do not map	Created as part of a loop trail by neighborhood walkers. Difficult to close as is on open ground and has been there for some time.	1	No	Moderate	Fair	Neighborhood/Loop Trail	No
106	Bitterroot Way Ambrose Connector	Keep but do not map	Makes sense as a connector trail and will probably be used either way.	1	No	Moderate/Heavy	Ok		
113	Whytes to Prairie Direct	Keep but do not map	There should probably be a version of this as getting from road to mars up to prairie via directissima is frustratingly indirect. Part of this trail will effectively be closed as the fence from NW Passage and R2M are put in.	1	Yes	Light/Moderate	Ok/Poor	Direct Route from the Road to Mars/Whytes area to Prairie	No
115		Keep but do not map	This will likely be difficult to close as it will be to close all neighborhood trails unless there is an alternative that is created.		No			Neighborhood trail to the Mt Helena area.	no

FID	NAME	ActionFinal	ActionNotes	Priority	Private	AmountUse	Sustainability	Reason	AlternativeExist
116		Keep but do not map	Neighborhood, difficult to close however might be considered for closure as unsure the amount of use or purpose. Evaluate for future closure.	1	No	Unsure	Fair	Unsure. Possibly a trail for those that took the wrong way off of Prospect Shafts. To be evaluated.	No
117	Reeder's to Prospect Shafts	Keep but do not map	This is a trail created by users leaving their house to get quickly on the Mount Helena trail system. Would be difficult to close as the user would most likely just walk next to it.	1	No	Light/Moderate	Ok	Neighborhood Trail	No
118	Reeder's Alt to Prospect Shafts	Keep but do not map	Difficult to close as users will walk a similar path if not this one if closed.	1	No	Moderate	1	Cutoff from Reeder's Alt to prospect shafts. Type of triangle trail.	No
119	Reeder's to Prospect 1	Keep but do not map	This will likely be difficult to close as it will be to close all neighborhood trails unless there is an alternative that is created.	1	No	light/moderate	fair	I assume this is a Neighborhood trail to get top the Mt Helena trailhead.	no
120	Reeder's to Prospect 2	Keep but do not map	This is a trail created by users leaving their house to get quickly on the Mount Helena trail system. Would be difficult to close as the user would most likely just walk next to it.	1	No	Light	Ok	Neighborhood Trail.	No
122	Daisy Hill Direct	Keep but do not map	This will be difficult to close. Destination Trail and is easily seen from the parking lot. Bench at top. Should probably get some sustainability measures and a candidate for a reroute in the future.	1	No	Moderated	Poor	Destination Trail	No
124	Daisy Hill Cut 2	Keep but do not map	Sees a fair amount of use and makes sense as one attempted to round Daisy Hill would have to go down and back up using the main trails. Might need some work in the future.		No	Moderate	Fair, in decent shape	Main trail goes down hill and back up again. This is a cut across to prevent having to do so.	Yes but Inefficient
125	Daisy Hill Cut 1	Keep but do not map	This is the direct route of Daisy Hill and most likely the trail usually used.	1	No	Moderate/Heavy	Fair	Logical connector for Daisy Hill instead of dropping down.	No
126	Adams Street to Reeder's Cutoff	Keep but do not map	Neighborhood trail. Difficult to close.	1	No	Moderate	Poor	A jump up trail to get to the Daisy Hill/Reeder's Cutoff area.	No
129	Acropolis Social 2	Keep but do not map			No			Direct Route above the switch	
130	Sparta to Hale Reservoir	Keep but do not map	Difficult to close. Neighborhood trail.		No				
135	Daisy Hill to Harrison Ave Connector	Keep but do not map	Neighborhood trail. Difficult to close	1	No	Light/Moderate	Fair	Connector from Harrison Ave to Daisy Hill	No
141		Keep but do not map	Gets a lot of use. This will need to be evaluated as to whether or not this can be closed or if it should be closed.		No			Original Archery Range Trail	Yes Above
145	Virginia Dale Rocky Road Access	Keep but do not map	Popular Trail. Heavy Footprint. Crosses Private. Difficult to close without land owner participation because of amount of use.	1	Yes	Moderate/Heavy	Poor	Direct route from the neighborhood to the Bompert Hill area.	No
146	2006 Entertainment Access Route	Keep but do not map	This is an access route to the top of entertainment ridge. This has seen measures to reduce visibility (grass seed) however will be maintained as an access route.	1	No	Light	Poor	This is an access route to the top of entertainment ridge. This has seen measures to reduce visibility (grass seed) however will be maintained as an access route.	yes
148	Entertainment Ridge Road	Keep but do not map	This is an old road on the top of the ridge. Closing would be very difficult and is occasionally used as emergency access or maintenance route.	1	No	Light/Moderate	Ok/Poor	Old road	no
150	Entertainment Fall Line	Keep but do not map	Very difficult to close, maintain the trail that goes around is the best we can do.	1	No	Heavy	OK/Poor might need some	The old road on the ridge. Very pronounced and useful for access to close to the top of Mt	
154		Keep but do not map			No				
157	South Oakes Social	Keep but do not map			No				
158	Top Mount Helena	Keep but do not map	This is the entrance/exit to the H trail. This should stay as should the			Moderate	Ok		
159	Hanging Draw Prospect Shafts Connector	Keep but do not map	I have seen this develop in the last year from a faint scratch to an actual social trail. This could be the routine trail of one or a small group of users. Might be difficult to close as the actual trail is so indirect from the 90 up. Difficult decision.			Light/Moderate	ok/Fair	More direct route to Prospect Shafts if you are going to or near the summit than Hanging Draw Primary.	Yes, but indirect.
168	h trail - lower	Keep but do not map	This will be difficult to close because of its popularity. It should be kept open and brought up to a level of sustainability where resource degradation is minimal.	1		Moderate	Although better than the above section of the H trail	Destination trail. Trail leads to the H and continues up the hill in a fall line fashion.	
169		Keep but do not map	Gets a fair amount of use and has a deep footprint. Would be difficult to close.	1		Moderate	Poor	Continuation of the water tank trail direct to the H	No
173	h trail	Keep but do not map	This portion of the H trail is in poor shape. This will however be difficult to close because of its popularity. This should be evaluated if sustainability measures could be taken to bring to an acceptable level so it does not get worse. Consider closing	1		Moderate	Poor	This is a historic trail up from the H.	No
174	Comm Tower Trail 3	Keep but do not map	Trail to get to the communication tower. Difficult to close is not on very steep terrain. Leave open as a way to get to the tower area but some thought should be given to this areas future.	1		Light/Moderate	Fair	Destination trail	Yes
176		Keep but do not map							
177		Keep but do not map							
178	East LaGrande Overlook Connector	Keep but do not map	These trails are redundant. I believe that they were caused by neighborhood users and dog walkers doing loop trails. I believe closing these will be difficult however feel these should be evaluated as potential for the second round of closure.	1		Light	Poor	Typical triangle trail most likely created by neighborhood users and dog walkers.	
179		Keep but do not map	This appears to be walked pretty frequently. I believe it is a trail for dog walkers making loops on the	1		Moderate	Fairly fall line, is not very sustainable. It might allow	Exists as a trail for neighborhood dog walkers and hikers	no
180		Keep but do not map							
182	Powerline 1906 cut across	Keep but do not map	This is kind of a cool trail. It is not in bad shape. Disguised from Powerline pretty well less so at 1906.	1		Light/Moderate	Fair	Historic Trail.	
188		Keep but do not map	Note of Heavy use leads me to believe that closing will be difficult but trail density and redundancy lead me to think that it should be closed.	2	yes	Moderate/Heavy	fair	Unsure. This portion gets a fair amount of use and might be a way to carry from the Prickly/Meatloaf Neighborhood down Raleigh to Road Island. Triangle trail?	
190	Beattie Meatloaf Connector	Keep but do not map	Fairly popular trail. This trail crosses private. Will be difficult to close. For now leave as is and do not close. Evaluate in the future or if this lot is sold or developed.	1	yes	Moderate	Ok/Fair	Popular trail from the Parking Lot, more direct path to Easy Rider.	Yes, Prickly Pear
191		Keep but do not map	Even though this is a social trail, its location makes sense. I would like to keep open and consider making it into a system trail.						
194	ascension loop cut off 1	Keep but do not map	This will be a difficult trail to close if we do not have an alternative. This of the trails in the area will be left open as a way to keep the public consolidated.	1		Light Moderate	Poor	Direct route to Ascension Loop and avoids the switchbacks.	Yes, but less direct.
202	East Legrande Ditch Trail 2	Keep but do not map	Keep open as it is the most commonly used neighborhood trail in the area and something will develop if we close all of the social trails in the area.	1	No	Moderate	Good	Exists as a trail for neighborhood dog walkers and hikers	No
203	East Legrande Jump Up 3	Keep but do not map	Keep open as it is the most commonly used neighborhood trail in the area and something will develop if we close all of the social trails in the area.	1	No	Moderate		Exists as a trail for neighborhood dog walkers and hikers	No
205	Daisy Hill 7	Keep but do not map	These trails are redundant. I believe that they were caused by neighborhood users and dog walkers doing loop trails. I believe closing these will be difficult however feel these should be evaluated as potential for the second round of closure.	1	No	Light/Moderate	Fair	Typical triangle trail most likely created by neighborhood users and dog walkers.	Yes
207	Daisy Hill 6	Keep but do not map	These trails are redundant. I believe that they were caused by neighborhood users and dog walkers doing loop trails. I believe closing these will be difficult however feel these should be evaluated as potential for the second round of closure.	1	No	Moderate	Fair	Typical triangle trail most likely created by neighborhood users and dog walkers.	Yes
208	Daisy Hill 5	Keep but do not map	This is	1	No	Moderate	Poor	Direct connector from Lower Quarry to Upper Quarry trail	
215	Comm Tower Trail 1	Keep but do not map	This is the end of the access road for the communication tower. This will have to remain and will get walked by curious users.	1		Moderate	Fair	Comm tower access.	Yes but this stays.
216	Comm Tower Trail 2	Keep but do not map	This would be the easiest of these routes to close. I believe this should stay because if we close it users would just walk to the side of it. (No or little side slope)	1		Light	Fair	Curious trail users and vantage point.	No
221	Little Moab Destination 2	Keep but do not map		1	No				
222		Keep but do not map	Gets a lot of use. This will need to be evaluated as to whether or not this can be closed or if it should be closed.	1	No	Moderate	Poor	Direct Path down the gully. Assume mostly used by bikes.	Yes